

The background of the entire page is a photograph of a rural landscape in winter. A dirt path leads from the bottom center towards the middle ground, where two people are walking a small dog. The trees are bare and covered in frost, and the air is misty. The overall color palette is cool, with blues, greys, and whites.

# *Village Voice*

DENHAM, HOXNE, SYLEHAM &  
WINGFIELD

DECEMBER 2024 — JANUARY 2025

Supported by community donation and advertising revenue

## PARISH COUNCILS

### DENHAM

Web: [www.denham.onesuffolk.net](http://www.denham.onesuffolk.net)  
Wendy Alcock (Clerk) 07726 924786  
Email: [denhamparishclerk@gmail.com](mailto:denhamparishclerk@gmail.com)  
Kerina Jane (VC)  
Duncan McGregor (C)  
Maria Ford  
Nancy Ford

### HOXNE

Web: [www.hoxne.onesuffolk.net](http://www.hoxne.onesuffolk.net)  
Sarah Foote (Clerk) 07554 733621  
Email: [pc@hoxne.suffolk.gov.uk](mailto:pc@hoxne.suffolk.gov.uk)  
Caroline Abbott  
Paul Ellis (VC)  
Alan Garnham  
Angus Herron  
Richard Kruszewski  
Marie Lagerberg  
Bryn Lerwill  
Jason Middleton  
Chris Parkin (C)  
Margaret Sillis

### SYLEHAM

Web: [www.syleham-pc.org.uk](http://www.syleham-pc.org.uk)  
Lesley Hastie (Clerk)  
Email: [lesleysylehampc@gmail.com](mailto:lesleysylehampc@gmail.com)  
Gloria Elsdon (VC) 01379 668409  
Malcolm Flounders (C) 01379 668413  
David Goodwin  
Layla Pettit 07715 609762  
Steve Phillips 01379 668686  
Robert Pilch 01379 668038  
Steven Scott 07780 977518

### WINGFIELD

Web: [www.wingfield-pc.org.uk](http://www.wingfield-pc.org.uk)  
Lesley Hastie (Clerk)  
Charlotte Claxton  
Robin Feavearyear 01379 586757  
Tony Jolly (VC) 01379 384024  
Lee Smith (C) 01379 384531  
Guy Mathias 01379 388391  
Dennis Murray 01379 384503

## CHURCH COUNCILS

### DENHAM

Helen Joslin (Sec.)  
Barbara Irwin (Treas.) 01379 669077  
Paul Chenery

### HOXNE

Deborah Harding (Sec.) 01379 668190  
Guy McGregor (CW) 01379 668434  
Wilf White (CW) 07932 768900  
Caroline Abbott  
Andrew Castleden  
David Hyde

### SYLEHAM

Sarah Pilch (Sec.) 01379 668038  
Julian Thompson (Treas.) 07770 582486  
Sarah Buckley (CW) 01379 668480  
Mary Lewis (CW) 01379 669258  
Jackie Campbell 01379 668306  
Lorraine Doll 01379 668637  
Thelma Soanes  
Jim Woodger

### WINGFIELD

Patricia Grant (Treas.) 01379 384985  
Jacky Taylor 01379 388355  
Robert Elliott  
Sarah Berry  
Neil Mathias

The Revd Canon Eleanor Goodison and  
Revd John McCracken are ex-officio  
members of each Parochial Church  
Council.

C Chair  
VC Vice Chair  
CW Church Warden

## Contents

All photographs subject to copyright

Photograph: Graham Turner

Front cover: Stopping for a chat on a frosty walk in Hoxne

- 25 Barbara Chenery Obituary
- 18 Book Review
- 41 Borderhoppa
- 14 Church News & Services
- 7 Christmas Tree Festival
- 9 Christmas Tree Re-cycling
- 9 Christmas Refuse & Recycling Collections
- 19 Citizens Advice
- 42 Crossword
- 6 Eye Bach Choir
- 5 Father Christmas's Visit
- 21 Harleston Choral Society
- 11 Hoxne Film Night
- 27 Hoxne Garden & Social Club
- 31 Hoxne Harvest Breakfast
- 24 Hoxne Heritage Group
- 24 Hoxne Phoenix Group
- 22 Hoxne Playingfield & Pavilion
- 20 Hoxne Post Office & Shop
- 10 Hoxne Village Hall
- 35 Knitting for Prem Babies
- 39 Library, mobile service
- 17 Little Lambs
- 41 Maynard Trust
- 18 Mothers' Union
- 39 New Reeding Woods
- 40 Parish Council Reports
- 8 Red Feather Club
- 33 St Edmund's Primary School
- 8 Santa Fun Run
- 37 Scouts
- 6 Syleham Carol Singing
- 12 Syleham Wingfield Village Hall
- 29 Telephone Box Book Exchange
- 21 University of the 3rd Age
- 29 Waveney Heritage Centre

*Please remember the*  
**Waveney Food Bank**  
 this Christmas

There's a food collection box  
 in St Peter & Paul's Church  
 Hoxne, or you can make a  
 donation online:

[waveney.foodbank.org.uk](http://waveney.foodbank.org.uk)

Your support is really  
 appreciated,  
**THANK YOU!** ❤️




*Buy your Christmas Tree  
 in Hoxne &  
 Support the Playing Field!*

A good selection of  
 Nordman Fir (non-drop) for sale  
**Saturdays and Sundays**  
**10.00 am - 12 noon:**  
 30<sup>th</sup> November & 1<sup>st</sup> December  
 7<sup>th</sup> & 8<sup>th</sup> December  
 14<sup>th</sup> & 15<sup>th</sup> December

Market House Drive,  
 Low Street, Hoxne

Please order from:  
**Carole Smith 01379 668210**

## Letters to the Editor

### Thank you to the Wingfield angels

A big thank-you to all those people that have helped St Andrew's Church Wingfield throughout 2024 - those involved with keeping the churchyard looking tidy, and with opening/closing the church; to the flower fairies and cleaners for making the church look beautiful for visitors and special events; to all who have cooked and donated for various fundraising events, and finally to Wingfield Barns for hosting Winter Coffee Mornings and Syleham & Wingfield village hall for the use of their venue. Thank you!

Jacky Taylor

### Village Voices Choir

Village Voices Community Choir thank everyone who supported our efforts to raise funds for the RNLI Bicentenary and Hoxne village shop. A fundraising sing at the Aldeburgh Lifeboat Station on 1st June raised just over £130. And our concert overlooking the Waveney Valley on 29th June raised £200 for both charities.

Jenny Knight

## Diary Dates

### Friday 6th Dec

Red Feather Club Carol Service p8

### Tue 10th Dec

Coffee & Cake SWH p15  
Phoenix talk, *Ruby Candles* HVH p24

### Wed 11th Dec

Book Club, the Swan, Hoxne p16  
Children's Crib service, Hoxne church p17



### Thu 12th Dec

Garden club quiz night HVH p27

### Fri 13th Dec

Eye Bach concert, Eye Town Hall p6  
Film, *Wilding* HVH p11

### Sat 14th Dec

Concert: Haydn's *Missa Sancti Nicolai*, St John's Church, Harleston p21  
Scouts' Santa Fun Run, Fressingfield p8

### Sat 14th-Sat 28th Dec

Hoxne Christmas Tree Festival p7

### Sun 15th Dec

Carols by Candlelight, Wingfield church p16

### Mon 16th Dec

Carol Service, The Depperhaugh  
Hoxne carol service p18

### Tue 17th Dec

Coffee morning WB p16  
Heritage Group mtg, The Swan, Hoxne p24

### Thu 19th Dec

Syleham Carol Singers' visits p6

### Fri 20th Dec

Quiz SWH p12

### Sat 21st Dec

Coffee morning, Hoxne church p18

### Sun 22nd Dec

Syleham carol service with the *Amici Choir*, Syleham church p15

### Tue 24th Dec

Children's Crib service, Wingfield church p16  
Christmas Eve, Syleham & Wingfield Hall open p13

All Church Service dates p14-15  
Mobile Library dates p39  
Borderhoppa dates p41

<b>HPP</b>	Hoxne Playing Field & Pavilion
<b>HVH</b>	Hoxne Village Hall
<b>SWH</b>	Syleham & Wingfield Village Hall
<b>WB</b>	Wingfield Barns

Thu 26th Dec  
Tug-of-War HPP p23

Fri 27th Dec  
Syleham & Wingfield village hall  
open p13

Tue 31st Dec  
New Year's Eve disco SWH p12

Tue 7th Jan  
Coffee & Cake SWH p15

Thu 8th Jan  
Play, *Father Brown & the Curse of  
the Christmas Fairy*, Diss Corn Hall  
p7

Thu 16th Jan  
Garden club talk, *Honey Bee Mine*  
p27

Fri 17th Jan  
Quiz SWH p12

Mon 20th Jan  
MU meeting, Time House Hoxne p18

Tue 21st Jan  
Coffee morning WB p16  
Heritage group talk, *The Detectorist*  
HVV p24  
Denham Parish Council Mtg. St John's  
church, Denham p40

Sat 25th Jan  
Burns Night SWH p13

Fri 31st Jan  
Bingo SWH p12

Sun 2nd Feb  
Pantomime, *Aladdin* HVV Sun p10



## Hello to all the children of Hoxne

I will be making my special appearance in Hoxne again on Christmas morning to deliver presents, with some local elves to help with deliveries - my sack will be very full!

I expect Rudolf to land the sleigh in **Denham Road** at about **6am**, reaching **Nuttery Vale** at about **7am** and **Low Street** about **8am**.

Just in case we get lost, please can you make sure all presents are marked with your full name, address and telephone number. You can use the label below. Please remember to tell me if you have any visitors staying, so I can deliver their presents too.

My friends at Aldersyde Cottage, Low Street (opposite the pump seat) are helping me. So please drop the presents there before 18th December. They are busy people but will be there between 9am and 11am and 3pm and 5pm each day. Any problems please telephone 01379 668636.

More address slips are  
available if you need them.

*Lots of love and  
Merry Christmas, from*

*Father Christmas*



NAME: .....

ADDRESS: .....

POSTCODE: .....

TEL. NO: .....



### Syleham Carol Singing

Thursday, 19<sup>th</sup> December 2024

Would you like to join us carol singing? Or would you like us to sing carols for you? We want to organise village carol singing for charity, once again, on Thursday 19<sup>th</sup> December.

If you would like to sing, please let us know (669320) and come and join us for a glass of wine and something to eat before we set off:



The White House Farmhouse  
Whitehouse Lane, Syleham

between 6.00pm and 6.30pm

If you would like us to come and sing carols to you, please give us a ring. Last year we raised £500 for EACH, which was fantastic.

So why not come and join us this year, or ask us to sing? We always like to welcome new people, so do get in touch; always happy to go as far as Wingfield or Weybread!!

In the letter of thanks that we received in 2023 from the East Anglian Children's Hospice, they said: "Your support is invaluable, as it enables us to continue delivering care to local families."

*Jane and Adrian Knott*

## Eye Bach Choir

### Christmas Concert

Conductor Leslie Olive

Supported by  
the New Buckenham Silver Band



Eye Bach Choir is a registered charity. No: 1114948

13 December, 7.30pm  
Eye Town Hall  
Eye, Suffolk

**Seasonal drinks  
& mince pies**

**Tickets £12 each  
£20 for two  
(advance bookings only)**

**Book via  
[eyebachchoir.co.uk/book-tickets/](http://eyebachchoir.co.uk/book-tickets/)  
or from The Handyman Store, Eye**

# Christmas Tree Festival, Hoxne

14<sup>th</sup> to 28<sup>th</sup> December

A gentle reminder that the Christmas Tree Festival will be taking place in the St Peter & Paul's church again this year.

In order to have the illuminated trees in place for the Christmas Carol Service, this year the event will be a little longer than previously. We plan to set up on Saturday, 14<sup>th</sup> December and have trees on display through to Saturday, 28<sup>th</sup> December.

As usual we are encouraging local clubs, associations and families to come along and decorate a tree. Some trees and lights will be available in the church from 10.00 on Saturday, 14<sup>th</sup> December and helpers from the tree team will be on hand to assist where necessary.

Please feel free to bring your own tree and decorations, however remember that any lights must be battery powered for safety reasons.

Over the coming weeks we will be contacting everyone who has supported our displays in the past, so do come along on 14<sup>th</sup> December and make this year's event one to remember. You will be most welcome.

David Hyde

davidjhyde@btopenworld.com

## Father Brown and the Curse of the Christmas Fairy

Thursday, 9<sup>th</sup> January 2025

4.00pm & 7.30pm

The Suffolk village of Dangleford is hanging by a thread! A series of poison pen letters, signed "The Christmas Fairy", threaten to expose corruption at the heart of village life. Even Father Brown's renowned frosted plums may fail to get the party going! He must use all his wits to stop the midwinter madness snowballing into...a snowball of terror!



Common Ground present another of their much-loved festive comedy mysteries.

The Corn Hall, Diss IP22 4LB  
01379 652241  
Tickets: £16 Under 21s, £10



WINGFIELD BARNS

Wingfield Barns regret to inform everyone that there will be no Christmas Market this year.

Unfortunately, due to a large number of stallholder cancellations that we have been unable to re-sell at the last minute, the event would not be financially viable. We have every hope that the event will return next year, and that you will all come and join us when that time comes.

Thank you all for your support over the year - we've had some wonderful events here and it has been lovely seeing so many of you.

*Merry Christmas and best wishes  
for a Happy New Year  
from everyone at Wingfield Barns.*

## Red Feather Club Carol Service



**Friday, 6th December 2024, from 7.30pm**

with Salvation Army Band  
Outside if weather permits  
Mulled wine and mince pies  
Museum and Brad's Bar will be open

The Red Feather Club, Coldham Hill, Denham, Eye, Suffolk, IP21 5DG, is operated by the 95th Bomb Group Heritage Association. Located in a number of faithfully restored buildings on one of the communal sites of the 95th, it helps keep their memory and the vital contribution they made to the war effort alive. The official UK home of the 95th is a living museum and monument to the only Eighth Air Force Bomb Group to receive the Distinguished Unit Citation three times.

**Mike Ager**

---

**1<sup>st</sup> Fressingfield Scout Group**

### ***SANTA FUN RUN 2024***

**Saturday 14<sup>th</sup> December 2024**  
**Run/walk/stroll, 11am start**

**From: Scout HQ, Priory Road,  
Fressingfield IP21 5PH**

**To: The Fox and Goose Inn**



1<sup>st</sup> Fressingfield Scout Group invite you to our fourth annual Santa Fun Run. Dress up, as Santa or any festive character, come along and be part of the spectacle. Registration is £5 per person (under 5s no charge). Please also try to raise additional funds for our fabulous Scout Group by securing sponsors from your friends and family. Registration and sponsor forms available at: [gsl@fressingfieldscouts.com](mailto:gsl@fressingfieldscouts.com).



Registered charity number: 1181154

Please visit our website: [www.1stfressingfieldscouts.org.uk](http://www.1stfressingfieldscouts.org.uk)

# MID SUFFOLK

## Christmas and New Year Waste Collection Schedule 2024-25



### Refuse (general rubbish) and recycling collections

Collections will take place as normal up to, and including, Tuesday 24 December 2024.

	Usual collection date	Amended collection date	Change
Refuse	Monday 23 December 2024	<i>No Change</i>	<i>None</i>
	Tuesday 24 December 2024	<i>No Change</i>	<i>None</i>
	Wednesday 25 December 2024	Friday 27 December 2024	2 days later
	Thursday 26 December 2024	Saturday 28 December 2024	2 days later
	Friday 27 December 2024	Monday 30 December 2024	3 days later
Recycling	Monday 30 December 2024	Tuesday 31 December 2024	1 day later
	Tuesday 31 December 2024	Thursday 2 January 2025	2 days later
	Wednesday 1 January 2025	Friday 3 January 2025	2 days later
	Thursday 2 January 2025	Saturday 4 January 2025	2 days later
	Friday 3 January 2025	Monday 6 January 2025	3 days later
Refuse	Monday 6 January 2025	Tuesday 7 January 2025	1 day later
	Tuesday 7 January 2025	Wednesday 8 January 2025	1 day later
	Wednesday 8 January 2025	Thursday 9 January 2025	1 day later
	Thursday 9 January 2025	Friday 10 January 2025	1 day later
	Friday 10 January 2025	Saturday 11 January 2025	1 day later

Collections will take place as normal up to, and including, Friday 20 December 2024.

From Monday 23 December 2024 to Sunday 5 January 2025, there will be **no** garden waste collections.

From Monday 6 January 2025, garden waste collections return to the normal schedule.



Real trees can be left at this site  
between **27<sup>th</sup> December** and  
**7am, Monday 20<sup>th</sup> January.**

Trees must be less than  
**7' tall & must have all  
decorations, stands &  
pots removed.**



For more information please contact:  
[recycling@baberghmidsuffolk.gov.uk](mailto:recycling@baberghmidsuffolk.gov.uk) or  
ring **0300 1234 000 (Option 4)**

## *St Edmund's Hall, Hoxne*

The December film is *Wilding*. Isabella Tree and her husband, Charlie Burrell, strive to breathe new life into the ailing Knepp estate. They reintroduce native ponies, deer, pigs and other wildlife, allowing nature to thrive. This documentary film is visually stunning and enlightening.

The village hall is run and staffed by volunteers. We need more helpers, no experience necessary, just enthusiasm and willingness to occasionally lend a hand to make a difference. You will have the opportunity to meet others in the village and to contribute to our community. If interested, please email [Bryn@Lerwill.com](mailto:Bryn@Lerwill.com).

If you would like to discuss a celebration at the hall, please email: [hoxnevbookings@outlook.com](mailto:hoxnevbookings@outlook.com). We have three different areas that are available to hire individually or collectively, so can suit all needs.

Website: [hoxnevillagehall.co.uk](http://hoxnevillagehall.co.uk)

**Bryn Lerwill**

# Aladdin

Puzzle House Pantomimes present  
A FUN-FILLED FAMILY PANTO!



**HOXNE  
VILLAGE  
HALL**

3.00 pm. Sunday 2nd  
February 2025

**IT'S LAMPTASTIC!**

All tickets £7  
Box Office Tel: 01379 384656

*Sunday,  
2nd February 2025  
3pm*

*Puzzle House Pantomimes  
present a traditional family  
pantomime based on the story  
of ALADDIN.*

Join in with the songs, solve puzzles on the way, and try to make sure that the wonderful Magic Lamp does not fall into the wrong hands!

Seven actors play a range of characters in a show full of songs, live keyboard music, thrills, spills and fun! This will be our sixteenth year visiting St Edmund's Hall.

The show starts at 3.00pm.  
There are two acts with a short interval.

The performance ends at approximately 4.45pm.

[www.puzzlehousepantomimes.  
weebly.com](http://www.puzzlehousepantomimes.weebly.com)

## *Hoxne Film Nights*



Isabella Tree and her husband, Charlie Burrell, strive to breathe new life into the ailing Knepp estate. They reintroduce native ponies, deer, pigs and other wildlife, allowing nature to thrive. The film is visually stunning and enlightening.

Cert PG

# **Wilding**

Friday 13th Dec

**Hoxne Village Hall**

7:30pm £4.00 a ticket

Tickets on the door

Bar open from 7pm and during the interval

Cert 15



## Mobile Barber & Hairdresser

Affordable prices

All in the convenience  
of your own home

Tel: 01379 384186 / 07982 538252

Dapperanddivine24@gmail.com

## CORNER CLASSICS & ENGINEERING LTD AGRICULTURAL & AUTOMOTIVE

SPECIALISTS IN CLASSIC CAR AND TRACTOR REPAIR  
AND RESTORATION



OPEN  
MON-FRI 8-5 PM  
SAT 8-12 PM

VISIT THE SHOP FOR

- A RANGE OF LAWN MOWERS AND OTHER GARDEN EQUIPMENT (SOLD & REPAIRED)
- HYDRAULIC HOSE & PTO STOCKISTS
- FABRICATION/ PARTS
- LUBRICANTS, OILS & ANTI FREEZE



07735207494

JAMIE@CORNERCLASSICS.CO.UK

LAXFIELD ROAD, STRADBROKE, SUFFOLK IP21 5NL

## Syleham & Wingfield Village Hall IP21 4LT

The village hall is open for Sports and Social Club activities every Tuesday and Friday evening from 8pm. The bar, manned by volunteers, is open and we have books, board games, darts and pool available.

On Tuesdays there're usually a few card players, some taking part in a little gentle, informal jive - join in or just have a chat and a drink.

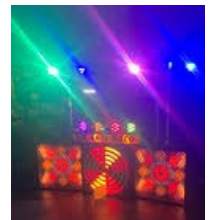
There's usually a planned activity on Fridays - but you're not obliged to join in!

**First Friday** - there's a good crowd coming along to listen to local talented people performing at Open Mic.

**Second Friday** - there's a chance to join in with Purplestar Karaoke. Free entry, raffle.

**Third Friday** - a fundraising Quiz evening supporting locally nominated charities and good causes; ideally teams of 4, £5 per person, no need to book. 7.30 for 8pm start, raffle, Mars bars for team with least points!

**The last Friday** - fundraising Bingo evening. Be ready to start just after 8pm; supporting locally nominated charities and good causes, raffle. Occasionally an event on the fourth Friday of a five-Friday month!



We would encourage those who come along to join the Sports and Social Club, at an annual cost of £3.50 (concs £3) to gain free or discounted entry to events, and to keep us legal.

**Christmas opening, all from 8pm -  
Tuesday 24th Dec, Friday 27th Dec**

**New Year's Eve** - £5, or free for Sports and Social Club members, pay on the door - join us to see in the New Year!

**Burns Night** - Saturday 25th January. Traditional food, superb address to the haggis & piper! Limited ticket numbers - please contact Donna 07876487294/ 01379668361

**J's Meadow** - is opposite the village hall, down the footpath. The pedestrian gate is always open! We now have new swings - one cradle swing for tiny people and a flat swing for not-so-tiny people. We would like to thank Suffolk County Council for the £1,000 that was given

towards play equipment.

Thanks to everyone who has supported village hall events which have allowed us to purchase this swing, suggested by our many young families and already put to good use. Thank you.



**Fundraising** - We've had a busy time and some very successful events in the last couple of months - thanks for all your support for Oktoberfest, the Scrap metal collection, Jumble Sale and Craft Fayre which have raised funds for the village hall, and the Quizzes and Bingo which raise funds for locally nominated charities and good causes. We have recently been able to support the local Messy church 10th anniversary Christmas party, Diss Citizens Advice, The Fire Fighters Charity and Diss British Legion. Thank you.



**Julie Thompson**  
Text 07929 794636  
[juliethompson435@gmail.com](mailto:juliethompson435@gmail.com)



*Syleham's Craft Fair*



## Church News

### O now carry me to Bethlehem

It's that time of year again! (Although if you go by the shops it has been Christmas since some time in September). The church starts looking forward to Christmas on Advent Sunday, which neatly falls on 1<sup>st</sup> December this year. But the emphasis is on preparation, making our hearts and souls ready to receive the infant Christ. Prayerful preparation will help us to experience some of the amazement and wonder, the awe, which the original witnesses to the incarnation of our God must have felt. Our hope is to be carried in spirit to Bethlehem and that momentous birth.

Nevertheless, we shall be rejoicing as we look forward with our usual programme of carol services (details below). We are particularly delighted to welcome the Village Voices to sing at our carol service in Hoxne on Monday 16<sup>th</sup> December and we have carols at Wingfield on Sunday 15<sup>th</sup> December and at Denham and Syleham on Sunday 22<sup>nd</sup> December. We will have a crib service at Wingfield on Christmas Eve and our Midnight Service is at Horham as usual.

And for the church the Christmas season continues throughout January. Everyone is welcome to Messy Christingle for Epiphany on Sunday 5<sup>th</sup> January at Syleham. The feast of Candlemas finally rounds off the season on Sunday 2<sup>nd</sup> February.

As you celebrate with family and friends, please don't forget those who may be on their own or who feel they don't have anything to celebrate. Jesus came to bring the love of God to earth. Let's share it with each other this Christmas time.

Have a very joyful Christmas when it comes and a peaceful New Year.

**Revd Eleanor Goodison**  
[eleanor.goodison@gmail.com](mailto:eleanor.goodison@gmail.com)  
 Tel: 07876 143579

## Church Services

### Denham, Hoxne, Syleham & Wingfield

**Planned church services in December/January** (changes to normal service times are shown in **bold**)

Every Friday: Compline at 6.00 pm on Zoom

#### December

#### *Sunday 1<sup>st</sup> December* *Advent Sunday*

9.30 am BCP Holy Communion, Hoxne

11.00 am Patronal Festival, Wingfield

**[Messy Church postponed for a week]**

#### *Sunday 8<sup>th</sup> December* *Second Sunday of Advent*

9.30 am CW Holy Communion, Redlingfield

9.30 for 10.00 am Café Church, Hoxne

**4.00 pm Messy Church Christmas party**

#### *Sunday 15<sup>th</sup> December* *Third Sunday of Advent*

9.30 am CW Holy Communion, Hoxne

10.00 am Village Service, Syleham ML

**4.00 pm Carols by Candlelight, Wingfield**

#### *Monday 16<sup>th</sup> December*

6.00 pm Carol Service, Hoxne

#### *Sunday 22<sup>nd</sup> December* *Fourth Sunday of Advent*

11.00 am Carol Service, Denham

11.00 am CW Holy Communion, Hoxne

**11.15 am Carol Service, Syleham ML**

#### *Monday 23<sup>rd</sup> December*

2.30 Carols at The Depperhaugh



### *Tuesday 24<sup>th</sup> December Christmas Eve*

4.00 pm Crib Service, Wingfield  
11.30 pm Midnight Service, Horham

### *Wednesday 25<sup>th</sup> December Christmas Day*

9.30 am CW Holy Communion, Hoxne  
9.30 am CW Holy Communion, Redlingfield  
10.00 am Christmas Celebration, Syleham  
11.00 am CW Holy Communion, Denham  
11.00 am CW Holy Communion, Wingfield

### *Sunday 29<sup>th</sup> December First Sunday of Christmas*

11.00 Benefice Holy Communion, Wingfield

### *January*

### *Sunday 5<sup>th</sup> January Epiphany*

9.30 am BCP Holy Communion, Hoxne  
11.00 am CW Holy Communion, Wingfield  
4.00 pm Messy Christingle, Syleham church

### *Sunday 12<sup>th</sup> January Baptism of Christ*

9.30 am CW Holy Communion, Redlingfield  
9.30 for 10.00 am Café Church, Hoxne

### *Sunday 19<sup>th</sup> January Second Sunday of Epiphany*

9.30 am CW Holy Communion, Hoxne  
10.00 am Village Service, Syleham  
6.00 pm Evensong, Wingfield

### *Sunday 26<sup>th</sup> January Third Sunday of Epiphany*

9.30 am BCP Holy Communion, Syleham  
11.00 am CW Holy Communion, Denham  
11.00 am CW Holy Communion, Hoxne  
4.00 pm All Age service

## *St Margaret's, Syleham*

### *Benefice Messy Church,*

held in Syleham's village hall, is going great guns and in December will be giving a Christmas party on **Sunday 8<sup>th</sup> (not 1<sup>st</sup>)**. An entertainer is booked and we are very grateful to the Sports & Social Club for a generous donation towards this cost. If other families would like to come along please just let us know. In January we shall, as last year, meet in St Margaret's Church for Epiphany, celebrating with Christingles and other crafts the journey of the magi who followed the star to the young child Jesus, Light of the World.



*Our Carol Service*, with the popular *Amici* singers, will be on **Sunday 22<sup>nd</sup> December** at 11.15am. Apologies that the date was wrongly given in the last edition of Village Voice for this service, which celebrates with tradition our joy and thanksgiving for the coming into the world of our Saviour, Jesus Christ.

*Calendar 2025* Syleham's pictorial calendars are now available for sale, with proceeds going to St Margaret's. Further information from [lorraine@syleham.uk](mailto:lorraine@syleham.uk)

*Coffee and Cake* in December will be on 10<sup>th</sup> (not 3<sup>rd</sup>) but in January should return to the usual pattern of first Tuesday, ie 7<sup>th</sup>. A friendly drop-in café open between 10am and 11.30am, with free coffee and home-made cake; it has become a useful contact point and we have had helpful and informative visits from Suffolk Healthwatch and Essex & Suffolk Water. The Macmillan Coffee Morning on 1<sup>st</sup> October raised £342; grateful thanks to all who supported it.

*Church repairs and maintenance* are at last in progress and may be finished before this edition of Village Voice appears. We continue to be grateful for local fund-raising efforts and for grants from Suffolk Historic Churches Trust, the Round Tower Churches Society and Benefact Trust and should be in a position to reclaim VAT through the Listed Places of Worship Grant whilst it is still available.

*St Margaret's* is open every day for visitors and for private prayer; we know from comments in the visitors' book that this is very much appreciated.

Contact for all above:

*mary.lewis43@icloud.com*  
*01379 669258 / 07775 732259*

## *St Andrew's, Wingfield*

The Harvest Supper on 26<sup>th</sup> October was a most enjoyable evening (although the quiz questions were a bit difficult!) and we were delighted to see so many people there. Many thanks as ever to Jacky and to Pat, Mel and Julie as well as many other contributors for all their hard work. We raised more than £800 for church funds.

## Carols by Candlelight

St Andrew's Church, Wingfield IP21 5RA

Sunday 15<sup>th</sup> December @ 4pm

followed by mulled wine and mince pies

+ Mini "Everything Christmassy"

Church Stall !!

Parking available at  
Wingfield Barns car park

## *St Andrew's Church Wingfield* *NEEDS YOU!*

Do you fancy a free workout  
to burn off those calories  
pre and post Christmas?

Then join us on the first Thursday of the month from 10am for an hour or two, raking leaves and generally having a tidy-up in the churchyard.

Come armed with gloves and a rake  
and we will supply you with  
hot drinks and yummy cake  
(all calories removed of course!)

A great way to meet people and  
enjoy a natter too.

Just turn up!



Special Christmas events at Wingfield will include our usual Carols by Candlelight at 4.00 pm on Sunday 15<sup>th</sup> December - everyone will be most welcome. And our children's Crib Service will be on Christmas Eve at 4.00 pm - come dressed as an angel, a shepherd or another character from the Christmas story (some costumes will be available at the church).

Then wind down after Christmas with our benefice service at 11.00 am on Sunday 29<sup>th</sup> December.

The Book Club will meet at 5.00 pm on Wednesday 11<sup>th</sup> December at our new home, the Swan in Hoxne. The book is still to be decided - contact Revd Eleanor for details nearer the time.

*Revd Canon Eleanor Goodison*



## Winter Coffee Mornings

at Wingfield Barns IP21 5RA  
on Tuesdays 10-12 noon

17<sup>th</sup> December 2024

21<sup>st</sup> January 2025

18<sup>th</sup> February 2025

18<sup>th</sup> March 2025

We look forward to seeing you there  
All very welcome!!



## **BABY and TODDLER GROUP**

**1<sup>st</sup> TUESDAY  
of the month  
12.30 – 2.30 pm**

**3<sup>rd</sup> WEDNESDAY  
of the month  
9.30 – 11.30 am**

**Term time only  
The Pavilion, Hoxne Playing  
Field IP21 5AD**

**CRAFTS/SINGING/PLAY**



## **CRIB SERVICE**

**HOXNE CHURCH**

**WEDNESDAY  
11<sup>th</sup> DECEMBER, 10 am**

**Join us for our annual  
Crib Service  
and the dressing of the  
Little Lambs tree ready for the  
Christmas Tree Festival**

Babies and under 5s are welcome,  
but you must be accompanied by a  
responsible adult.

For further information e-mail  
[cabbott364@gmail.com](mailto:cabbott364@gmail.com)

## **Little Lambs**

Little Lambs have been meeting again this term, when we have enjoyed plenty of craft activities, including making leaf hedgehogs and getting very messy with hand printing!

The children have a fantastic repertoire of songs and Bea's rendition of Bob the Builder is quite remarkable.

We are trialling a Wednesday morning session as well as our usual Tuesday session, so from January we will be meeting on the first Tuesday of the month from 12.30 to 2.30 (bring your lunch) and the third Wednesday of the month from 9.30 to 11.30.



But before that we have our annual Crib Service on Wednesday, 11<sup>th</sup> December at 10 am in Hoxne church. We will also be decorating the Little Lambs' tree, ready for the Annual Christmas Tree Festival in the church. We look forward to seeing you.

For further information please contact Caroline at [cabbott364@gmail.com](mailto:cabbott364@gmail.com)

## **St Peter & St Paul's, Hoxne**

The Church website is now up and running, there are still some gaps to fill but if you stop to have a look I am sure you will agree that it has been worth the wait: [www.hoxne.church](http://www.hoxne.church)

I am sure other people will write about things that have happened in the past months but I will mention a few. Club Create met at half term, the Youth Group continues to meet at the pavilion and the Little Lambs are now having two sessions per month.

The EADP came along to take photographs at the 10<sup>th</sup> anniversary of

*Cont.*

Messy Church; some of the original attendees came along to the party, as did Mary Womack. A great time was had by all.

'Open the Book' sessions have recommenced at the school. The school has had its Harvest Service at the church and is planning its Christmas Service on 20<sup>th</sup> December.

At the other end of the age range we continue to have rewarding relations with the Depperhaugh.

By the time you read this we will have had the Remembrance Service, St Edmund's Day Service and the St Edmund's Fair, and will be looking forward to Christmas. The Carol Service will be on the 16<sup>th</sup> December with the *Village Voices* choir attending. All are welcome.

The Christmas Tree Festival will be 14<sup>th</sup>-28<sup>th</sup> December (*see poster, page 7*).

The Church Wardens are investigating the replacement of the microphones in the church - the existing ones are showing their age!

The new year may see a new sign for the front of the churchyard, incorporating the new logo as seen on the website.

The churchyard continues to be a 'work in progress', after the wet start to the year which continued into early summer. There is a lot of work still to do; dead trees have been removed and there have been working parties. Things should have stopped growing by now but you will know from your own gardens that the grass is still growing, and the churchyard is no different. I hope to report more next time.

The coffee mornings have been successful with a good number of people attending. The next one is on the 21<sup>st</sup> December, commencing at 9.45am - the Christmas tree lights will be on. We will be taking a break in January and February and will recommence on 15<sup>th</sup> March.

**Deborah Harding**  
01379 668190

## Mothers' Union

The Hoxne Mothers' Union Fellowship Group meets on the third Monday of the month at 2.30pm at Time House, Low Street, Hoxne.

### Monday 16th December:

We are joining in the carol service at the Depperhaugh care home at 2.30pm. All are welcome to come to hear the Christmas story and sing carols to our less active village residents.

### Monday 20th January 2025:

Usual meeting at Time House at 2.30pm.

New members are always welcome at our Fellowship Group.

**Cathie McGregor**  
Group Leader 01379 668434

## Book Review

### *For Thy Great Pain Have Mercy On My Little Pain*

by Victoria Mackenzie

This book features the lives of two women living during the Middle Ages: world traveller Margery Kempe, and the anchoress known as Dame Julian of Norwich.

It is a slim volume, with short chapters featuring each of the women—educated Margery and introspective Julian. Margery struggles with the lack of power and authority that all women suffered during the period, her obedience to men expected in both church and family.

Julian abandons her secular life to live a life of prayer in a small cell attached to a church in Norwich. There are some amazing passages in the novel describing Julian's surrender to the limits of her cell, and the realisation of how large a life can be lived in a small space.

The book was chosen for us to read by Cathy Mitchell, who thoroughly recommended it.

If you are interested in the mystics of medieval England, this is a book for you.

**Gloria Bell**



Mid Suffolk

**The festive season can be a financially challenging time, and often borrowing money or using a credit card to fund Christmas can seem like your only option. But there are steps you can take to keep your spending under control and avoid falling into debt.**

The festive season can be a financially challenging time, and often borrowing money or using a credit card to fund Christmas can seem like your only option. But there are steps you can take to keep your spending under control and avoid falling into debt.

The first thing to do is make a budget and stick to it.

Consider who you're buying gifts for, what other seasonal expenses you have, and how much you can realistically afford to spend. Always keep receipts, or ask for gift receipts, in case you overspend and need to return something. And remember that household bills may be higher during this period due to colder weather and spending more time indoors.

If you've built up debt, please don't ignore bills or letters. Speak to the organisation you owe money to, as they may let you pay smaller amounts.

Pay 'priority debts' first, like rent, mortgage arrears, council tax, and energy bills. For other types of debt like credit cards or loans, gather all the information on what you owe, create a budget and contact your creditors to set up an affordable repayment plan. This might seem scary, but it's an important first step.

If your budget just doesn't add up and you need help to afford essentials like bills and food, see what cost of living support is available on the Citizens Advice website.

It's especially important to check if you're eligible for the Winter Fuel Payment, which will now only be paid to those who receive Pension Credit or other means-tested benefits. If you make a claim for Pension Credit by 21st December, you might still receive the Winter Fuel Payment.

If you do find yourself struggling financially during or after the holidays, don't panic. Support is out there, and Citizens Advice can help you understand what's available. We're here to help you find a way forward.

Citizens Advice Mid Suffolk can provide in depth advice on this issue and much more, including debt, finances, employment, benefits and family/relationships. You can contact them by phone on 01449 676060, visit in person at Milton House, 5 Milton Road South, Stowmarket IP14 1EZ or use the contact form at [midsuffolkcab.org.uk/contact-us](https://midsuffolkcab.org.uk/contact-us). Opening hours are Monday to Thursday 9.30am to 3.30pm and Friday 9.30am to 12.30pm.

Our office will be closed between 24<sup>th</sup> and 27<sup>th</sup> December and the 1<sup>st</sup> January. Our Eye and Needham Market outreach services will also not be available on Friday 20<sup>th</sup> and Friday 27<sup>th</sup> December.

**SUNDOWN**  
GUITARS

**Set ups, Servicing  
Re stringing and Repairs  
Accessories & Spares**

Chickering Corner Farm, Hoxne IP21 5BT  
Please phone to discuss your requirements  
or to make an appointment

**07958 758 602**

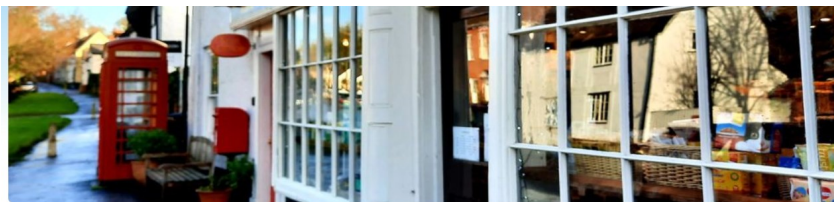
  
**CHRIS HOWARD**  
**PLUMBING AND HEATING**

- ◆ All household plumbing
- ◆ Oil and gas boiler installations
- ◆ Hot water cylinder installations
- ◆ Water softener installations

**Local, professional  
and reliable service**      **Free non committal quotes**

**07749315908**

[chrisjhoward5@googlemail.com](mailto:chrisjhoward5@googlemail.com)  
[www.chrishowardplumbingandheating.co.uk](http://www.chrishowardplumbingandheating.co.uk)



## *Hoxne Post Office & Shop*

Hi everyone,

It's been a long and frustrating few months since our last update to you all. Things have been uncertain which is why we haven't featured here for a couple of editions, but here is the latest.

### *The Community Ownership Fund*

- The Community Ownership Fund (COF) was suddenly frozen when the early election was called - a couple of weeks before we were due to submit our bid.
- There had been hope that the Autumn budget would reveal what Labour would replace it with, but it hasn't brought anything new.
- There may be something from Labour in the future, but no details yet.

### *Changes we have had to make as a result*

- Our vision of what we want the post office and shop to become hasn't changed - we wish to safeguard this vital asset's future but also extend its impact. The shop and post office did already add huge value to the village, being a social hub. Under community ownership its reach will grow further through volunteering opportunities, new services, extended opening hours and increased range of products.
- But we have had to change three key aspects of the project: the

sequence in which we spend money, how it is funded, and timescales.

### *First change: Reducing upfront project costs*

- An important thing to note about COF funding; the previous government wanted to guarantee success if it could, so it encouraged the front-loading of as many costs as possible (i.e. if the roof might need fixing in ten years, do it now whilst the government is helping pay for it).
- In response to COF closing we have therefore removed costs from the plan we had front-loaded which has brought the total project cost down from £683k to c. £550k.
- Aspects of the plan like roof repairs, re-insulation, solar panels, heritage displays and garden works will now be achieved through grant funding after we are up and running.

### *Second change: how we fund the project*

- We have been working on possible alternatives, including private funding and other grant funders.
- One of the new funding avenues we have been investigating is borrowing some of the funds needed from the government via the Parish Council.

- The Debt Management Office (DMO) provides loans to local councils for projects such as ours. You may have heard of this under its previous name - the Public Works Loan Board.
- The good news is that other communities have used this loan facility successfully for buying community assets.
- Hoxne Parish Council have agreed in principle to borrow money from the DMO as long as two conditions are met; the business case is robust and the community is fully consulted before a final decision is made.

### *Third change: timescales*

- Given the above changes we have had to accept we won't be in a position to buy the post office and shop soon.
- Depending on the funding route we may be looking at the summer of 2025; before that is possible.
- The good news is that we have received written confirmation that The Post Office is willing to preserve the current community branch contract until then.

### *Next steps*

- The project team continues to meet weekly and will be pursuing all funding options.
- We will also be calling another village hall meeting to update the community.

We remain open as always to your questions and of course to suggestions or leads on funding sources! If you are able to help with the funding of the project, now is the time to come forward! Thank you all for your continued support.

*Mike*

## *University of the 3rd Age*

There will be no monthly talk in December, but we wish you all a very happy Christmas and a healthy and peaceful New Year. We look forward to seeing you again when our monthly talks resume on 15 January 2025 at 2.00 pm, in St John's Church, Harleston.

For further information please visit our website: [u3asites.org.uk/harleston](http://u3asites.org.uk/harleston) or contact Kim Poulton on 01986 788149.

## *Harleston Choral Society*

You're invited to join us on Saturday 14 December at 7.00 pm in St John's Church, Harleston IP20 9AZ for our programme of beautiful Christmas music: Haydn's *Missa Sancti Nicolai* and other seasonal music and carols, some with audience participation. All with our four soloists and the Harleston Chamber Orchestra. Tickets £15 (including wine or a soft drink and a mince pie) are available from choir members, on the door on the night, or from Harleston Information Plus. Accompanied children go free.



We'll be returning after Christmas for more singing, on Monday 6 January 2025, 7.00 pm for a 7.30 start, in The London Road Church, Harleston IP20 9BH, in preparation for our Summer Concert 2025, which will be the climax of our 25<sup>th</sup> anniversary. Free parking is available in The Original Factory Shop (TOFS) car park opposite. Practices are on Monday evenings, 7.30 - 9.30 pm, and we welcome everyone, whether or not they have sung in a choir before.

See the *About Us* and *Location and Contact* sections of our website: [www.harlestonchoral.org.uk](http://www.harlestonchoral.org.uk)

*Caroline Rodbourne*  
[caroline@rodbourne.org.uk](mailto:caroline@rodbourne.org.uk)  
01986 782545

## *Hoxne Playing Field & Pavilion*



### *WHAT A WIZZ, FIZZ & FANTASTIC SHOW !*

Thank you Hoxne, and folk from a wider area too, for a wonderful turn-out at the first firework display to be held in the village for nearly forty years. It is estimated that up to five hundred people, including many families with children, turned up at Hoxne playing field and pavilion for the event on Friday 1<sup>st</sup> November.

It was a stunning display and is now set to become an annual event in the village calendar, along with the early May Bank Holiday Sunday Community Day and the

Harvest Breakfast. A date has already been confirmed for the 2025 fireworks show on Friday 7<sup>th</sup> November. So if you missed the 2024 display make an advance diary entry now.



“The organising committee would like to say a massive public thank you to Billy Ellwood, the pyrotechnic expert, who not only set up the entire display but also generously donated a proportion of the fireworks” said Stuart Jarrold, chairman of the social committee. “It is extremely gratifying that so many people praised the organisation and astonishing quality of the display. Many expressed the wish that we stage a firework display each year in the future.”

On local community websites nearly three hundred people responded with complimentary comments and here are just three of them:

“It was the best and longest display we have been to as a family. Value for money was brilliant. Will definitely go again.”

“What a turn out. Lovely staff. Lovely event. Kiddies loved it too.”

“Look forward to next year. Well done the organisers. Thank you all it was amazing.”

## WE ARE HERE FOR YOU AT HOXNE

What sort of events would you like to see at Hoxne pavilion and playing field? The committee are conducting a survey to see how local people would best like the community facility to be used for the benefit of everyone.

So far there have been exotic food evenings arranged by the Suffolk Supper Club, live jazz concerts, regular bar opening on the first Friday evening of every month, often with local musicians or singers performing.

There is a youth café on the last Friday of every month from 7pm to 9pm with games for those in school years 7 to 11 (ages 12 to 16) and each week there is the *Little Lambs* nursery group for children up to three years old and their carers.

In addition the bar is also open every Thursday evening throughout the year with *Ed's Plaiçe* fish and chip van serving customers from 4pm to 7pm.

A Burns Night is being considered for January 2025, along with other themed events.



The major community event, with live bands, children's entertainers and a classic vehicle display, has been staged on the first Sunday of the Bank Holiday weekend at the beginning of May. This has happened for the past three years, starting with the Queen's Jubilee, followed by the King's Coronation and a festival in May 2024. Plans are now being drawn up for a similar event on Sunday May 4<sup>th</sup> 2025 to which every organisation in the village will be invited to have a stall, table or gazebo to promote themselves and/or sell their wares.

The committee is constantly striving to encourage more use of the bar, kitchen, play area and pavilion throughout the winter and summer. Already it is

## New venue for Tug-of-War on Boxing Day

The annual Hoxne tug-of-war will have a new venue for Boxing Day, 26th December 2024. It is going to take place at the pavilion and playing field. Bar will be open from lunch-time and men's and women's teams are invited. More details on local community websites and Hoxne pavilion Facebook page nearer the time.

regularly being hired out for parties, weddings, christenings, wakes and other events. Perhaps business organisations would like to use the premises for regular or occasional meetings, away from the usual office environment?

There is wifi available and ample parking, including electric charging points. If you, your organisation or anyone you know wish to book the facilities please email the booking clerk Duncan McGregor on [dunxmccgregor@hotmail.com](mailto:dunxmccgregor@hotmail.com) for details of hiring fees. Special discounts apply for Hoxne area residents.

Please email me [stuartjarroldassociates@gmail.com](mailto:stuartjarroldassociates@gmail.com) with any ideas, suggestions or proposals you may have for events you would like to see at Hoxne pavilion and playing field.

We are a registered charity and rely on fund-raising and income from events and hiring fees to maintain this important asset for the village. Our small and dedicated team of volunteers run and administer the facility in their spare time. If you can help at events, or on bar duty, we would love to hear from you.

**Stuart Jarrold**



**CRYSTAL  
CLEAN**

**Specialist Cleaning Services**

**Carpet Hard Floor Upholstery**

07984 648 296 ☎ 01379 678 806

[info@crystalclean.services](mailto:info@crystalclean.services)

[www.crystalclean.services](http://www.crystalclean.services)

  
NICE  
NATIONAL INSPECTION COUNCIL FOR ENVIRONMENTAL CLEANING  
ASSOCIATE MEMBER 2009

## Hoxne Phoenix Group

With good to firm conditions in early October our Race Night was under starter's orders. There were nine races in all. With a line forming for the tote everyone quickly got into the swing, or should I say the paddock. With much encouragement from the rails, money was won and more frequently lost, but a great evening was had by all. A big thank you to the village hall team who kept us all watered and to the local businesses that supported the event. All profits made from the event will be given to local charities - to be decided at our next committee meeting in November.

### Floristry demonstration

On Tuesday 12<sup>th</sup> November Jenni Baker (florist) will be presenting to our group. We are looking forward to Jenni's demonstration. There will be a raffle for three mini displays at the end of the evening.

### Sandringham trip

All tickets for the Sandringham Craft, Food & Gift Fair have now been sold! The marquees and arcades have over 100 stalls offering a wide range of gifts and ideas. There will also be an array of food and drink from both regional and national producers and not forgetting the chefs demonstrating in the Country Kitchen. I'm sure the day will be a great success.

### Ruby Candles

With a change to our issued programme, Gill from *Ruby Candles (Brome)* will be with us on **Tuesday, 10<sup>th</sup> December**. Gill will be talking about the formation of her locally-based business and will have some of her beautiful candles for sale on the evening. Great presents with advent already upon us!

The Phoenix Group meets monthly on the second Tuesday at 7.30 pm in the lounge of Hoxne village hall. We also meet monthly for a local walk and again for a coffee and chat. New members and guests from Hoxne and surrounding villages are always welcome.



**Daphne Cook**  
[daphnec.cook@yahoo.co.uk](mailto:daphnec.cook@yahoo.co.uk)

## Hoxne Heritage Group

On Tuesday, 17<sup>th</sup> December Hoxne Heritage Group members will meet at The Swan in Hoxne at 7.30pm to chat, discuss all things relating to the history of the people of Hoxne and the local area; houses, past and present, interesting local finds and historically interesting artefacts. The general public are welcome to sample a trial members meeting or two without joining the group, we are actively recruiting new members and will welcome your thoughts and ideas for the coming year.

### The Metal Detectorist

On Tuesday, 21<sup>st</sup> January 2025 our series of talks continue at the village hall in Hoxne. This time we are pleased to welcome **Joe Edwards-Gill**, a well-known local Metal Detectorist who will regale us with stories of his adventures and finds in his travels around fields and sites in Suffolk and Norfolk. He will be bringing along some of his interesting local finds. Joe is an experienced speaker and has given many talks locally, including one to a packed audience at Diss Corn Hall in July this year. If you missed that, come along to Hoxne village hall and enjoy his fascinating talk.



As usual this talk will start at 7.30pm and will cost £5 at the door (or just £3 for HHG members). The bar will be open from 7pm and all members of the public are welcome.

To learn more and possibly to become a member of the Hoxne Heritage Group, please visit our web site at:

[www.hoxnehistory.org.uk](http://www.hoxnehistory.org.uk)

On the web site you will find a host of useful and interesting facts, information and photographs and will learn much more of the fascinating history of Hoxne and surrounding villages. Or pick up one of our new pamphlets at the village hall where you will find details of joining without having to go online. The cost of joining HHG is very modest at just £10 per year.

**Rob Hooker, Publicity Officer**  
[hoxnehistory.org.uk](http://hoxnehistory.org.uk)

## *Barbara Elizabeth Chenery 1931-2024*

**Barbara Elizabeth Chambers** was born on 18<sup>th</sup> June 1931. She was adopted by William and Alice Hancock on the 2<sup>nd</sup> April 1942 and married Eric Chenery in September 1955 at Hoxne Baptist Church.

You couldn't get more "Hoxne" than Barbara whom we met soon after moving into the village 13 years ago when she brought us some pigeons to eat. Little did we know that this little old lady would really colour our life in the village. When the village shop reopened, she was chosen to open it as she was the "Queen of Hoxne" - she was the May Queen for Hoxne as a girl. She celebrated her 90<sup>th</sup> birthday on the village green, organised by neighbours.

She loved her adopted parents; she was so excited to go to court in Stradbroke to ask if it was her wish to be adopted by her new parents at the age of 11. She loved her adoptive mother but worshipped her father who was at one time a butler at Brome Hall - maybe the last one. I asked her about this and she told me "He would come home of an evening and we would laugh at the goings on at the hall".

She recalled the Americans based at Horham in the war and being brought to a children's Christmas party along with the late Alan Burridge. There was jelly and ice cream and so many treats she hadn't had before. The Americans loved this cute little girl and wanted to take her back to the states.

I have found many accounts of Barbara's involvement with the Baptist Church written in the Diss Express from the 1940s and 1950s. Her parents, her husband Eric and Barbara herself were heavily involved and committed. Barbara was Treasurer of the Women's Meeting and had been awarded numerous certificates for Scripture examinations as a young girl.

She attended the Gospel Hall in Diss until it closed. Her daily bible readings were laid out on her bed and moved downstairs with her when she could no longer go upstairs. She strictly kept the sabbath, never shopped on a Sunday, staying in and listening to Classic FM.

Barbara had long-standing loyalties to Hoxne and local families and neighbours. She started work as a domestic help when very young, 13 or 14. She worked for the Mollers at the Red House in Low Street during the war years, and worked for quite a few people in the village. In an article from the Diss Express describing her wedding in great detail it is clear that the guests named and gifts received were still important to Barbara 69 years later.

Barbara's house was full of life memories. Shelves of thimbles, clocks that chimed, holiday souvenirs and cupboards full of tins and chocolate bars (she had a sweet tooth). She travelled to the Italian Lakes, Venice, Austria, Switzerland and Germany, catching the coach from Stradbroke. She may have been the essence of this area of Suffolk but she also knew other parts of the world.

Barbara brought out the best in the people of this community. Friendships endured for years. People visited and gave her all sorts of food; for example every week the Swans would bake her scones, and then a few days later she would give them to neighbours! Sometimes neighbours would come downstairs and find

Barbara sitting in their living room, having let herself in.

Barbara passed away on 15<sup>th</sup> September, the day the shop closed that had been opened by the Queen of Hoxne - the day of the harvest breakfast. She is a whisper of almost a century of this village life and a world that is lost with her death. A contradiction - vulnerable yet strong, gentle, yet determined - I never heard her say anything bad about anyone. She touched many lives. Barbara, thank you and may you rest in peace.

*Written by R Giffin  
with contributions from Clive Baxter*



GRAHAM BORRILL

★

**THATCHER**

COSY COT HECKFIELD GREEN  
HOXNE EYE SUFFOLK IP21 5AB

TEL : 01379 668 777 MOBILE : 07960 254 537

Email : grahamborrill@yahoo.com

**HOXNE SERVICE STATION**  
Servicing and Mechanical  
Repairs

**MOT preparation**  
**Welding repairs**

**Tel: 01379 668307**

**Computer Repair &  
IT Support**

**Fast, Friendly and  
Understandable**

PCs, Laptops, Printers,  
Tablets, Virus Removal,  
Tune Ups & Upgrades,  
Broadband Problems,  
Networks etc.

**Home User or Small Business  
We Can Help You!**

**Hexpek.it**

**07908 222428 - 01379 668150**  
[www.callthecomputerguy.co.uk](http://www.callthecomputerguy.co.uk)



**No matter what size  
your budget**

**Our compassion is constant**

 **Rosedale**  
FUNERAL HOME

We are a family business and promise to provide exceptional care and a truly personal 24 hour service, when you need it most.

Diss **01379 640810 (24 hrs)**  
Harleston **01379 853999 (24 hrs)**  
[www.rosedalefuneralhome.co.uk](http://www.rosedalefuneralhome.co.uk)

**K.G. READ & SON  
PLUMBING & HEATING  
CONTRACTOR**

---

- **BOILER INSTALLATION,  
SERVICE & REPAIR.**
- **OIL TANK REPLACEMENT.**
- **BATHROOM & SHOWERS  
INSTALLED INCLUDING  
CERAMIC TILING.**

---

**MARCUS READ**  
**01379 668328**  
**07710 757334**  
**ORCHARD HOUSE,  
HECKFIELD GREEN, HOXNE**

## Hoxne Garden & Social Club

Despite the relatively mild temperatures of late, there is no denying that autumn is here. Falling leaves, heavy morning dew and occasional morning mist.

It's a busy time in the garden clearing vegetable beds, tidying borders, putting furniture and patio pots away and cleaning and insulating the greenhouse. Bryn and I cleaned our greenhouse ready to line with bubble wrap to retain the heat (we heat it to around 5 degrees centigrade in order to overwinter a collection of tender plants). After cleaning and before bubble wrapping, we decided to host a dinner party in it. It is a nice space and possibly larger than our dining room. Luckily the weather was mild and we had a very enjoyable evening with local friends. It has now been bubble wrapped and starting to fill up with the tender plants.

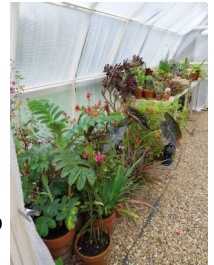
Since my last report we have had two very well attended Garden Club talks by Luci Skinner and Ben Potterton. Luci gave an excellent talk on salvias which, in my opinion, had just the right balance of science, information about the vast range of salvias in cultivation and their care. Ben spoke about the Wild Waveney and the many conservation projects he is

involved in - from re-wilding an area of land on Dickleburgh moor to encourage water birds and wildlife to preserving native wildflowers, some of which are only found in our area. In addition he is cultivating and planting food source plants to encourage rare insects, in particular the large copper butterfly which feeds on water dock.

The Christmas get-together for the Garden Club will take place on Thursday 12<sup>th</sup> December from 6.30 pm in the village hall. Following the success of last year's event we have decided to have a quiz again, which Peter has very kindly agreed to compile and host. Non-members are very welcome to join members in their team. We all bring food to share. If you would like to enter a team (max. 6 per team), please let me know by e-mail [jeanette@lerwill.com](mailto:jeanette@lerwill.com)

On 16<sup>th</sup> January Stacy Cronly-Dillon from Sunnyfields Apiaries will be giving a talk titled *Honey Bee Mine*, all about honey bees.

**Jeanette Lerwill**



*Northern lights, Cross Street, Hoxne 10th October 2024*



# TREE MENDERS

Environmental Arboriculture



TREE SURGERY.  
HEDGE CUTTING/LAYING.  
FIREWOOD.



TREE PLANTING.  
TREE FELLING.  
STUMP GRINDING.

Free Quotes and advice.  
treemenders@yahoo.com  
www.treemendersnorfolk.co.uk

Established 2004. Fully qualified and insured.  
**01379 853070   07905 750070**



» CLEAN & FRIENDLY SERVICE

» FULLY INSURED

» SMOKE TESTS

» INSURANCE CERTIFICATES

» CCTV INSPECTIONS

» COMPETITIVE RATES

**PLEASE CALL 01986 799175** ICS

REGISTERED MEMBER OF THE INSTITUTE OF CHIMNEY SWEEPS

## LESTER MAYES

### Carpet & Upholstery Cleaning

- Friendly, local service*
- Carpet & fabric protectors applied*
- Moth treatments available*

01728 660186  
07867 681571



## Automotive Repairs

**Unit 4**  
Corner Green Farm  
Wingfield Green  
Wingfield  
IP21 5RE

Servicing  
Diagnostics  
Air-conditioning  
Brakes  
Exhausts  
Tyres  
Wheel Alignment  
MOTs

Phone:  
**07769 968160  
01379 388378**

**www.jrautomotiverepairs.co.uk**  
Email: enquiries@jrautomotiverepairs.co.uk

# SEPTIC TANK SERVICES

- INSTALLATIONS • EMPTYING • SERVICING •
- REPAIRS • DRAIN JETTING •
- DRAIN CAMERA SURVEYS •
- DRAINAGE WORKS • DIGGER WORKS •



**LENNY JOLLY   07905 794221**

**www.septictankservices.co.uk**



## *Waveney Heritage Centre*

### *Brockdish IP21 4JP*

During the winter months the radio museum at the centre in Brockdish will be open once a month, namely the last Sunday of the month. We continue to expand and renovate our collection of mainly radios so that displays are continually changing.

We also have a large collection of 78rpm records we often play when the museum is open. We are also in the planning stage of offering courses on repairing vintage audio equipment to be held at the centre. Watch this space!



The centre continues to organise fund-raising events in an effort to make it self-funding. In October we held our first quiz which

was a great success raising some £350. Held at Brockdish village hall we must thank the village hall for allowing us to use their facilities. We are planning to hold another quiz in the new year but this time at the centre.

Our programme of monthly talks continues, please refer to our website for the latest details.

Finally, a desperate plea for more volunteers. Some of the current volunteers are planning to 'retire' in 2025 having given many years of loyal service to ensure that Waveney Heritage Centre keeps going. If you would like to help with either administering the archives, or

repairing vintage audio equipment, or just helping in more practical ways such as serving teas and coffees at the monthly talks or other events, then please contact us.

**Chris Parkin**  
[www.waveneyheritage.com](http://www.waveneyheritage.com)

## *Telephone Box*

### *Book Exchange*

I am sure many residents of this village, and those close-by, will know of the book exchange and hopefully found it a useful local service.

There have however been new arrivals in our village who possibly do not know of its existence, and I wish to take this opportunity to encourage them to look in - the old telephone box next to the shop in Hoxne.



Our stock is built up from voluntary donations, and I hold a small stock in order to refresh the shelves as necessary. I ensure books are clean and complete, and kept in order. There is a small junior section, which I hope we can develop further. However book size is a problem in such a small building!

I hope this information will be of interest to existing as well as our new residents and you can find some good winter reads!

**Colin Ablitt**

# ACORN TREES

Professional advice & work

## TREE SURGERY

Crown Reductions

Section Felling

Dead Wooding

Felling

Hedge Management

Garden Work

Landscaping

Fencing

## ADAM PICKESS

Merrist Wood College

City & Guilds Tree Surgery

Full public liability insurance

**FREE ESTIMATES**

**Telephone: 01379 588122**

**Mobile: 07776 235006**



## DAN TO EARTH ELECTRICAL

[dantoelectrical.co.uk](http://dantoelectrical.co.uk)

## COMMERCIAL, DOMESTIC & INDUSTRIAL

Covering the whole of Norfolk & Suffolk,  
by choosing Dan To Earth Electrical Ltd.  
you can guarantee a reliable, well-priced  
and high-quality service.

Danny Lamb  
Electrician

Horham, Suffolk  
[danlamb@live.co.uk](mailto:danlamb@live.co.uk)

**07756 204 354**



**01379 384 889**



## DISS SELF STORAGE

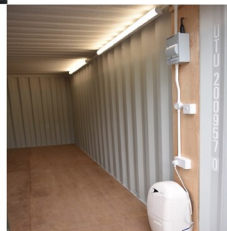
**07757 689988**

[www.DissSelfStorage.co.uk](http://www.DissSelfStorage.co.uk)



**For all your  
Commercial &  
Personal  
Storage Needs**

**Also Click &  
Collect Boxes  
& Packaging**



## HANDYMAN SERVICES EYE

All manner of repairs  
improvements & general building  
works undertaken large & small.

Friendly reliable honest work.

**Please call Mark**

**07818 088080**

**01379 871399**



## Safe & Sound Hygiene and Pest Control

For ALL your Domestic  
and Commercial Pest Control

No obligation – Free Survey / Quotes

Call us to discuss your pests

**01379 788865**

[safeandsoundhygieneandpestcontrol.co.uk](http://safeandsoundhygieneandpestcontrol.co.uk)

## Hoxne Harvest Breakfast

This year's event was a massive success yet again, even the sun came out in support. This is purely down to organisation and the generous help from all of you who gave up your time to make it another success. We really couldn't do it without you. We received a donation of delicious sausages from Deaglan Hall, a cash donation from a couple who could not attend this year and for all donated raffle prizes, thank you very much. Thank you also to Alan and Joan Garnham from Waveney Tree Specialists for the use of their truck to ferry the tables and chairs back and forth.



Next year will be the 50th year of the breakfast, therefore we plan to make it an even bigger and impressive event. Watch this space!

**See you on Sunday 21<sup>st</sup> September 2025  
for the 50<sup>th</sup> year!**

The event was started as just a bit of fun and was never intended to make a big profit. Having said that, this year after expenses we raised £828. The profit will be shared equally between the village hall and the playing field pavilion.

Once again, thank you so much to all of those who helped and those of you who turned up on the day to support the event.



We would be extremely grateful for anyone who would like to join the organisation committee as we could do with a few more people, not just on the day. Please get in touch if you can spare some time prior to the event.

**Gill Short 07880 634224 &  
Carole Smith 668210**



## R GRITTON

**Professional Decorators**  
**High quality, reliable service**

**For all your interior and  
exterior requirements**

**Telephone: 01379 586768**

**Mobile: 07766 982600**

## Traditional Oak Carpentry

**Carpentry Repairs**

**New Oak Homes  
and Extensions**

**Garden Structures**

**Condition Reports**

**3D Design Service**

**01449 768817**

[www.traditionaloakcarpentry.co.uk](http://www.traditionaloakcarpentry.co.uk)

Soil Association Member AG25612



**Anglian Organics**  
**Organic Fruit & Veg**

Delivery to your village every Wednesday

**Mobile 07748 156953**

Email for produce list

[anglian.organics@outlook.com](mailto:anglian.organics@outlook.com)



Catholic Parish of  
The Most Holy Trinity  
Church of St Henry Morse  
Shelfanger Road, Diss IP12 4DX  
Parish Priest: Father Alex Anaman

Tel: 01379 642914

[parishpriest@holytrinitydiss.plus.com](mailto:parishpriest@holytrinitydiss.plus.com)

### Mass Times

Saturday: Vigil Mass 6pm

Saturday: 10am

Sunday: 10am

Wednesday & Friday: 9.30pm

No Mass Monday, Tuesday or Thursday

Please check the website and newsletters  
for Mass times on Holy Days  
Confession: Saturday 10:45

Contacts:

[office@holytrinitydiss.com](mailto:office@holytrinitydiss.com)

[alex.anaman@rdea.org.uk](mailto:alex.anaman@rdea.org.uk)



### IZZY SHAW, CELEBRANT

**Working with you for family  
& funeral ceremonies**

Choose a celebrant  
for all your life events -  
the beginning, middle & end

Please don't hesitate to ring  
for a chat

Mb: 07752 00 2525

[izzy.shaw@uksoc.com](mailto:izzy.shaw@uksoc.com)

[www.izzyshawcelebrant.co.uk](http://www.izzyshawcelebrant.co.uk)

Instagram

Weddings, Vow renewals, Anniversaries,  
Event planning, Speech writing,  
Master of ceremonies,  
Naming ceremonies,  
Life & family celebrations,  
Funerals, Scatterings,  
Memorials, Living wishes, Living funerals,  
Eulogy preparation,  
Funeral planning support

Design a ceremony just the way  
you want it to be

**Really Rather Weddings**  
**Member of UK Society of Celebrants**  
Your life your way

# St Edmund's Primary School

This academic year has begun with a busy first half term. Year 6s completed their Bikeability cycling proficiency course during the first few days where they learnt the skills to be safe cyclists. LKS2 followed this with an educational visit to Gressenhall where they learnt more about their topic work in history of what it was like as a child in WWII. We were also able to visit the circus which was based at our partner school, Mendham Primary. This was a lovely surprise for the children as both schools were able to learn circus skills throughout the week.

We have been learning about recycling and our Year 5 and 6 pupils participated in a Sustainability workshop. Rowan class have been swimming at Harleston pool whilst Diss is being refurbished and Beech class will have the opportunity to swim for all of Spring term in the new year. We also had a visit from an Invictus athlete which was very special.



Our Harvest Festival held at the Church of St Peter and St Paul's was attended by many of our families and we collected many items of produce to be donated to the Waveney Foodbank.

This month we will hold a Scholastic book fair which will be the first one for many years so we are excited about that. This will help both raising literacy skills and funds for the school which are much appreciated. Mr Lea will be holding another Learn more with Mr Lea session, which is open to parents to come and learn more about a focused subject. In the past he has covered maths and phonics.

Oak Class will be visiting Framlingham Castle this half term, Beech Class will go to Flixton Air Museum and Rowan Class will be visiting the Sainsburys Centre for Visual Arts.

Autumn term 2 will also be full of Christmas plans and KS2 will be busy with their enterprise sale where they incorporate their classroom skills by planning, ordering, making, advertising and then selling their produce. All profit goes back into the class for the children to use on items or events of their choosing.

If you would like to come and visit to see us in action, please give us a call.

We currently have spaces across the school. You can contact us on 01379 668283, or email:

[office.stedmunds@consortiumtrust.org.uk](mailto:office.stedmunds@consortiumtrust.org.uk)

*Simon Lea, Academy Head*



St Edmunds  
Primary School

# WELCOME TO OUR SCHOOL



**COME  
AND SEE  
FOR  
YOURSELF**

We would like to invite you to come and visit our school. We work collaboratively to create an environment which provides the best opportunities for all of our learners

- ✓ See our school in action
- ✓ Meet our wonderful staff and pupils
- ✓ Get your questions answered

### For More Information

Call : 01379 668283  
Email : [office.stedmunds@consortiumtrust.org.uk](mailto:office.stedmunds@consortiumtrust.org.uk)





**Daily Care  
Suffolk  
Ltd**

**ARE YOU LOOKING FOR EXTRA CARE AND SUPPORT  
TO HELP YOU REMAIN INDEPENDENT  
WITHIN YOUR OWN HOME AND COMMUNITY?**

Daily Care Suffolk (previously known as The Daily Care Agency, established 2005) is a locally based, small and friendly team of carers providing the local community with trustworthy and reliable home care for the elderly.

**ARE YOU A CARER?  
ARE YOU LOOKING FOR A CAREER CHANGE?**

We are currently recruiting kind, caring individuals in this area. Previous experience is an advantage but not essential, as full training and mentoring will be provided.

***WE TAKE PRIDE IN HAVING TIME TO CARE,  
AND OFFER INDIVIDUAL SUPPORT  
TO OUR CLIENTS.***

You will have the opportunity to:

- \* Work flexible shift patterns
- \* Be paid above the living wage rate, with mileage pay and paid travelling time between clients
- \* Be part of a small and friendly team.

For further information, please contact:  
01379 388438 or 07535 077081  
or email: [OFFICE@DAILYCARESUFFOLK.CO.UK](mailto:OFFICE@DAILYCARESUFFOLK.CO.UK)

HIGH BANKS  
ATHELINGTON ROAD, HORHAM, EYE, SUFFOLK IP21 5EH

*Syleham resident Christine Kenyon  
is knitting for premature babies in the  
Neonatal Intensive Care Unit,  
Norfolk & Norwich Hospital*

*Can you help?*

*Balls of wool and yarn are needed please*

I have been knitting blankets and clothing for the Neonatal Intensive Care Unit at the Norfolk and Norwich Hospital. Last month, I had the pleasure of personally delivering the knitting to them, and they told me they are in great need of small blankets for the Unit.

If anyone has any unwanted balls of soft wool or yarn, please message me or call me on 07497 389922 so that I can knit some more to take to the hospital in the New Year.

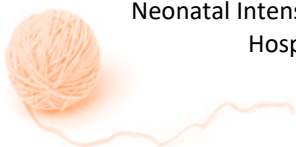
Here is my blanket pattern if you would like to knit a blanket for the Intensive Care Unit yourself.

***Christine Kenyon***

***Blanket pattern***

***DK (soft) wool, 4mm needles***

- ◆ Cast on 3 stitches
- ◆ Working in garter stitch (all plain), increase 1 stitch at the beginning of every row until side measures 50 cm.
- ◆ Then decrease 1 stitch at the beginning of every row until 3 stitches remain.
- ◆ Knit last 3 stitches together and secure the tail end.



Neonatal Intensive Care Unit, Norfolk and Norwich University  
Hospital, Colney Lane, Norwich NR4 7UY

## **UNDER ONE ROOF**

### **THE COMPLETE HARD LANDSCAPING SERVICE**

DRIVEWAYS, NATURAL  
STONE PATIOS, DECORATIVE  
WALLING, WATER FEATURES,  
ENTRANCE GATES & FENCING.

PRESSURE WASHING CLEANING  
OF PATIO AND DRIVEWAYS

FULLY INSURED FAMILY  
BUSINESS WITH  
OVER 20 YEARS EXPERIENCE

FOR A FREE NO PRESSURE  
QUOTATION PLEASE CALL  
MARK ON 01379 677027 OR  
07768 636618

## **G.G. EVANS**

### **Pest Control Services**

**07795 177695**

**01379 608932**

**info@ggevens.co.uk**

**MOLES, RABBITS,  
WASPS & MORE**



## **B.C. GODDARD**

INTERIOR / EXTERIOR  
PAINTER, DECORATOR  
PROPERTY MAINTENANCE

Call Brian for a free quote on

**01379 388174**

or mobile

**07759 956627**

[bcgoddarduk@outlook.com](mailto:bcgoddarduk@outlook.com)

## **T.L. PLANT HIRE**

***If you are in a hole...  
...we'll dig you out***

**MINI &  
MICRO DIGGERS**

**DUMPERS • BREAKERS • MIXERS  
TELEPORTERS • SMALL PLANT  
SCARIFIERS • TURF CUTTERS  
WACKERS • ROTAVATORS  
STRIMMERS  
TOOL HIRE**

**07881  
642232**

[tom@tlplanthire.co.uk](mailto:tom@tlplanthire.co.uk)

Bridge House, Denmark Hill, Palgrave, Diss IP22 1AB

*Diggers can be provided with operator, if required.*

## **Michael Last Landscapes**

HARD and SOFT LANDSCAPING  
PROPERTY MAINTENANCE  
INTERIOR/EXTERIOR PAINTING

**07342 880254**

**01379 669006**

[last.michael@btinternet.com](mailto:last.michael@btinternet.com)

## *Fressingfield Scouts*

We returned to evening meetings in September and at the start of term made use of the remaining light evenings with some outdoor sessions. Initially most Sections have had some games and activities to get to know their new members, who have either come up from other Sections, joined us from Harleston, or are new to Scouting.

Evening activities for Cubs have been astronomy, cooking, swimming, fire lighting, archery, and a night hike. The Beavers have been working on Communicator, Health and Fitness and photography badges and learning about emergency telephone procedures.

Our youngest section - Squirrels - had S'mores around a campfire, tried soft archery, built Lego bridges, had a film night and got to know their new members. In the older Sections, the Explorers have worked on obtaining First Aid qualifications and Scouts have been cooking. They achieved their Science badge with some experiments including extracting DNA from strawberries. In addition, they have been busy making Christmas crafts to sell at fundraising events including the Weybread Christmas Craft Fayre on 16<sup>th</sup> November and our Santa Run stall at the Fressingfield Community Market on 14<sup>th</sup> December.

Our Friday Open Evening was a great success, the weather was kind and lots of parents and visitors came. The barbeque, curry stall, café, tombola and camp doughnut stall did a good trade and the free "have a go" activities were popular.



*HQ kitchen*

During the evening 17 top awards were presented to young people, a new Leader was invested, a training award was presented and some long service and good service awards were presented to Leaders.

The Explorers had an intense weekend at an



*Crossing Two Tyre Ravine*

Explorer 24, a straight through 24 hour event near Thetford packed with activities.

Pioneer Troop Scouts have finished their camping season with two very different weekends. The first was at Hallowtree Scout campsite near Ipswich where the weekend was filled with activities ranging from climbing and abseiling via an assault course and a ravine crossing challenge, to toasting marshmallows on a campfire. They were joined for the camp by the Warriors Beaver Colony who made kites, went on the bouldering wall, drove pedal go karts, played team games, made their own picnic and ate it on a hike and joined in the campfire.

The second weekend was our annual Middle of Nowhere Camp for older members which was spent in a small wood a mile from the nearest tap or road, sleeping in bivouacs, cooking on fires, collecting tree leaves for a Cubs activity later in the week and, supervised by a butcher, preparing a deer carcass for a venison stew for supper.

1st Fressingfield Scout Group invites you to our fourth annual Santa Fun Run on Saturday the 14th December 2024 (*please see poster on page 8*).

At the end of the Summer term some long-standing members of our Leader and Executive Team left us for other roles in Scouting with the Norfolk County Scouts team. So, if you would like to help us to continue to provide an excellent facility for the young people of the area please get in touch to find out which role might suit you. There is lots of information about us on our website: [www.fressingfieldscouts.com](http://www.fressingfieldscouts.com).

If you would like to know more, email our Group Lead Volunteer at: [gsl@fressingfieldscouts.com](mailto:gsl@fressingfieldscouts.com) or speak to any Leader.

## Nick Fulcher

**Plasterer & Floor Screeder**  
**FREE ESTIMATES**

**Telephone 01379 642979**

## Michael Bloomfield Electrical Services

Part P Compliant



All Domestic & Commercial work  
Fuse boards, Fault finding  
New wiring / re-wiring  
Testing & Inspection  
EICR

07590 507307

[www.bloomfield-electrical.com](http://www.bloomfield-electrical.com)

## Ed's PLAICE

*Traditional Fish and Chips*

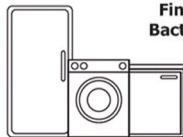
- Wednesdays: serving from 3 - 7pm  
PULHAM MARKET, The Green
- Thursdays: serving from 4 - 7pm  
HOXNE, The Playing Field Pavilion
- Fridays: serving from 4 - 7pm  
WORTHAM, Common

**Tel: 01379 741967**  
**Mob: 07904 231006**

Doug Aiken part of

## DK Appliances Ltd

**Domestic Appliance Repairs,  
Sales of New and Reconditioned Machines**



**Finbows Yard, Station Road,  
Bacton, Stowmarket IP14 4NH**

**Telephone:  
01449 780398**



## SCOTT REGAN CHIMNEY SWEEPING

**Professional, clean & qualified service**

- Industry standard certificate issued with every sweep
- Brush & HEPA filtered vacuum • Power sweeping
- Chimney cowl fitted • Tar removal from chimney
- Full public liability insurance

Tel: 01379 678881

Mob: 07962 207846 / 07740 008456

Email: [info@scottreganchimneysweeping.co.uk](mailto:info@scottreganchimneysweeping.co.uk)

[www.scottreganchimneysweeping.co.uk](http://www.scottreganchimneysweeping.co.uk)



## SCOTT REGAN WINDOW CLEANING

- All domestic & commercial windows cleaned
- Inside and outside cleans available • Builders first cleans • Solar panels cleaned • Fascias, soffits & gutters cleaned • Conservatory roofs cleaned
- Patio & driveway cleaning also undertaken
- Full public liability insurance

Tel: 01379 678881 Mob: 07962 207846 / 07740 008456

Email: [info@scottreganwindowcleaning.co.uk](mailto:info@scottreganwindowcleaning.co.uk)

[www.scottreganwindowcleaning.co.uk](http://www.scottreganwindowcleaning.co.uk)



## JD Tree Services & COUNTRYSIDE MANAGEMENT LTD

- Tree removal, felling or reduction
- Site clearance • Hedge cutting
- Stump grinding • Chipping
- Waste removal

**Professionally trained, fully insured,  
friendly service**  
**Call today for a free no obligation quote**

**City &  
Guilds  
NPTC  
Qualified**

**tel: 01379 671285/07736 311782**

**email: [info@jdtrees.co.uk](mailto:info@jdtrees.co.uk)**

**web: [jdtrees.co.uk](http://jdtrees.co.uk)**

**Checkatrade**

## New Reeding Woods

Autumn is the 'season of mists and mellow fruitfulness'. The woods are changing colour, the Guelder rose is glowing and hung with vibrant berries, and all is peaceful. The field maples are a vibrant gold with the leaves falling fast around them. There is fruit still on the medlar, and on the meadow one lone buttercup is still in flower - a reminder of summer past.



*Guelder rose*

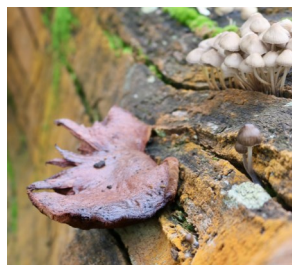


*Robin's pin cushion*

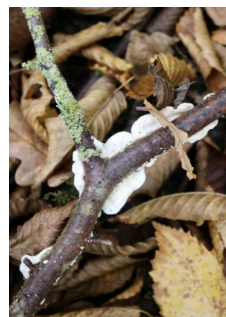
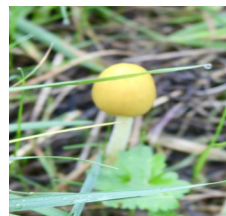
Climate change is causing autumn days to be warmer. Trees respond to a fall in the day temperature to start to change leaf colour. Autumn colour change is coming later with the mild weather. The dry and hot summers we have experienced recently can also cause stress to the trees, leading to shorter and less colourful autumn displays.

As I walked around the pond I saw a Robin's pincushion on a dog rose stem. It

looks like a mossy clump around the stem and has a hard central core. Earlier it would have been a red colour. They are caused by the larvae of the hall wasp. The larvae feed on the hall over the winter and emerge as adults in spring. The hall causes very little harm to the rose.



On the ground, in the grass and on fallen wood and amongst the leaf litter I found a large variety of fungi. The colours and shapes vary but they are all recycling the dead wood and leaves into nutrients that will benefit them and the plants around them.



*Different types of fungi*

If you are interested in improving our local environment whilst getting hands-on experience, please contact our secretary Peny Conway on 07495 875299

## Suffolk Libraries – Mobile Library Routes

**Denham & Wingfield** Calling every 4 weeks on **Thursdays**

Next stops: **12 December & 9 January**

Wingfield, Vicarage Road layby (near Church Road): 10.50-11.05am

Denham post box: 11.25-11.35am

**Syleham, Brome & Oakley** Calling every 4 weeks on **Tuesdays**

Next stops: **10 December & 7 January**

Syleham, Wingfield Road (Junction with Weybread Road): 11.45-11.55am

Brome & Oakley village hall: 12.15-12.30pm

## Parish Council Reports

Please see page 2 for Parish Council contact details and website addresses.

### Denham

The next Parish Council meeting will be held on the **21st January** at 19:30, St John the Baptist Church. All are very welcome. The agenda can be found on our website:  
[denham.onesuffolk.net/parish-council/](http://denham.onesuffolk.net/parish-council/)

*Wendy Alcock*  
*Parish Clerk, Denham Parish Council*

### Hoxne

Hoxne now has a new county councillor. His name is Henry Lloyd who was elected as a Conservative councillor by just 4 votes. He has already met the parish council and hopefully is busy working on our behalf with the traffic management proposals.

The County Council has issued the report into the effects of Storm Babet and how it affected the village last year. The report is very general and so Hoxne Parish Council has asked for more specific guidelines on what we can do to lessen the impacts of any future storms, and more to the point what the County Council is proposing to also do in this area. A copy of the report is available via the Parish Council website or a paper copy by request to the Parish Clerk.

In consultation with the Community Benefit Society (CBS) trying to buy the shop and post office premises the council has now agreed in principle to consider taking a Public Works Loan out to help with this. The CBS has also suggested that a rise in Hoxne Parish Council's share of the Council tax may have to happen in order to help with the start-up costs of getting the shop and post office up and running again. Both the loan and any increase in council tax to fund the shop will only be agreed to by the council if it is given the mandate by the residents of Hoxne in order to do so. A referendum therefore would be held to gauge the support of residents for this to happen.

This will only happen if the council is happy with the business plan put forward by the CBS.

The council has agreed to buy another vehicle activated sign which measures traffic speed. Meanwhile with the help of our new county councillor we are hoping to get our traffic management proposals agreed to by the highways authority (Suffolk County Council) before the county council stops making major policy decisions prior to the county councillor elections in May of next year.

At the November meeting Dr Margaret Sillis was co-opted to the Parish Council. There is still one vacancy to be filled on our parish council.

*Chris Parkin*  
*Chair, Hoxne Parish Council*

### Syleham

Councillors met on the 6th November and discussed the need to produce an emergency plan for adverse weather including flooding, snow and high winds. Councillors were also updated on the proposal for the Syleham Heritage Walk - a five mile circular walk around the village celebrating Syleham's historic buildings and sites and marking the 850 year anniversary of Earl Bigod's surrender at The Cross at Syleham. The Parish Council part-funded the costs of new swings at J's Meadow which have now been installed.

The next meeting of the Parish Council will be on **5th March 2025** at 7.00pm at Syleham and Wingfield village hall. For more details visit:  
[sylehamparishcouncil.com](http://sylehamparishcouncil.com)

### Wingfield

The next meeting of Wingfield Parish Council will be at 7.30 pm on **Wednesday 20th November** at Syleham and Wingfield village hall.

*Lesley Hastie*  
*Chair, Syleham & Wingfield Parish Councils*



Door-to-door dial-a-ride service  
into the local towns.

Weekly members' outings  
throughout the year

Group hires for not-for-profit  
organisations

***Borderhoppa Outings for  
December 2024:***

- Mon 2<sup>nd</sup>** - Highways Nursery &  
Shopping Centre,  
£15.00
- Mon 9<sup>th</sup>** - Thetford Town &  
Garden Centre,  
£15.00
- Mon 16<sup>th</sup>** - Beccles, £15.00
- Mon 23<sup>rd</sup>** - Christmas Lunch at  
The Jolly Farmers,  
Fornsett, £35.00  
(includes three-course  
meal and transport)

To book or for more information  
please call 01379 854800 or visit our  
website [www.borderhoppa.org](http://www.borderhoppa.org)

## *The Maynard Trust*

### *Supporting Education for residents of Hoxne*

The Maynard Trust can support  
with grants towards meeting the  
costs of educational resources  
and activities. Grants are  
available to anyone who lives in  
Hoxne, irrespective of age.

To apply, just email or write  
(preferably the applicant rather than  
a parent or guardian) to:

Richard Giffin (Trustee)  
54, Low Street, Hoxne, Eye,  
Suffolk IP21 5AS  
[richard.giffin@yahoo.co.uk](mailto:richard.giffin@yahoo.co.uk)

Please include an email address  
for quick correspondence.

### *The deadline for receipt of applications for January's Meeting:*

**31<sup>st</sup> December 2024**

All Grants are subject to  
meeting Maynard Trust Criteria  
and funds being available  
from the Trust.



**GOLDBROOK**  
BOARDING KENNELS & CATTERY  
Nuttery Vale, Hoxne, Suffolk IP21 5BB  
Telephone 01379 668267  
[info@gbkac.co.uk](mailto:info@gbkac.co.uk)



"Our Team"

**Proudly owned and run by  
Sara & Don Warren**

Please feel free to pop in and meet us,  
we will be happy to show you around

#### **OPENING TIMES**

**Monday - Saturday 8.00am - 12 noon  
and 3.00pm - 6.00pm**

**Sunday and Bank Holidays  
9.00am - 12 noon**



A special Christmas  
thank-you to  
**Mike Horne**  
for compiling all our  
unique crosswords.  
Cheers Mike,  
much appreciated!

## Crossword Puzzle No. 162

To enter the crossword competition, send\* your solution to the editor for a chance to win £20. The winner will be the first correct entry picked at random from those received by **Wednesday, 8th January** at the latest. Please add your name and address to entries.

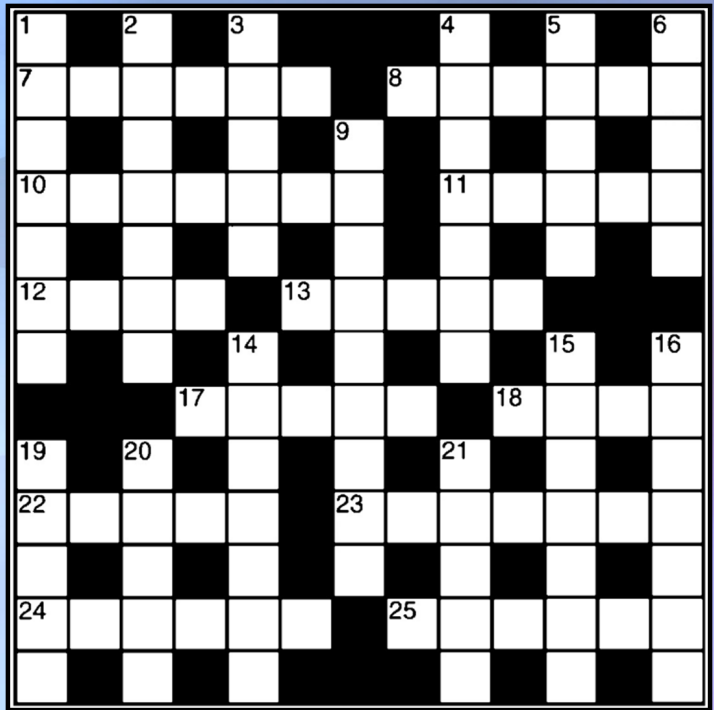
\*You can email a photograph or scan of your entry to:  
vvsuffolk@live.co.uk

### Across

7. Scan did include being outspoken (6)
8. Get his version of rowing crews (6)
10. Correctly but not altogether sprightly (7)
11. Show indifference to an offcut of a posh rug (5)
12. Large jug discovered in sewerage (4)
13. Inquisitive Mr Parker (5)
17. Detection system works either way (5)
18. Sounds as if nailed by diplomacy (4)
22. Concerning a boxing match (5)
23. Babyhood in fancy surrounds (7)
24. Jovial and in the mood to applaud (6)
25. Keep a part-time soldier in drizzle (6)

### Down

1. Not exactly the colour of clarets (7)
2. Sign reg for a laugh (7)
3. Emir thoroughly hid his merriment (5)
4. I leave government officer in a large church (7)
5. Tot of whiskey - not very long (5)
6. Customary practise employed in a sausage (5)
9. I pay Roman to rid his obsession with fire (9)
14. Pasteur wanders on grazing land (7)
15. Deny a saying in disarray (7)
16. Power necessary for a triathlete (7)
19. Stride into spring (5)
20. A dog with wanderlust (5)
21. Frequently found in a soft environment (5)



**The winner of crossword puzzle no.161 was: J Chambers**

**Answers: Across:** 7. Severn 8. Eights 10. Heroine 11. Rouge 12. Loot 13. Crete 17. Drift 18. Itch 22. Crane 23. Earnest 24. Really 25. Rascal

**Down:** 1. Asphalt 2. Everton 3. Trait 4. Migrate 5. Shout 6. Aster 9. Terrified 14. Orderly 15. Stretch 16. Shuttle 19. Score 20. Kayak 21. Broad



# Cowhams

***"For today's automotive demands"***



Scan or visit  
[www.cowhams.co.uk](http://www.cowhams.co.uk)

**01379 388 999**  
[enquiries@cowhams.co.uk](mailto:enquiries@cowhams.co.uk)

## Waveney Tree Specialists Ltd

Your local tree surgeons, based in Hoxne, covering  
East Anglia. Established in 2008.  
Accredited, Fully Insured & Qualified.

We specialise in both domestic and commercial  
works and offer the following services:

Tree surgery and felling  
Tree & Hedge reshaping and pruning  
Disease and storm damage  
Stump removal

For a free no obligation estimate, contact us on

**01379 668636 or 7990 801388**

E: [info@waveneytrees.co.uk](mailto:info@waveneytrees.co.uk)

W: [www.waveneytrees.com](http://www.waveneytrees.com)



## ***EDITOR***

Lesley Balian

Blackberry Cottage, Cross Street, Hoxne IP21 5AH

Tel: 01379 669221

E-mail: [vvsuffolk@live.co.uk](mailto:vvsuffolk@live.co.uk) Website: [vvsuffolk.co.uk](http://vvsuffolk.co.uk)

## ***DEADLINES***

Issue	Copy Date
February / March	8th January
April / May	8th March
June / July	8th May
August / September	8th July
October / November	8th September
December / January	8th November

## ***ADVERTISING***

If you would like to place an advertisement,  
let us know and we will contact you

### **ADVERTISING CO-ORDINATOR**

Dawn Lodge, 5 Cross Street,  
Hoxne, Eye IP21 5AJ

Tel: 01379 668521 E-mail: [dlodge@talktalk.net](mailto:dlodge@talktalk.net)

## ***DISTRIBUTION***

Sally Dudley and teams of distributors in each village